

KENNAMETAL

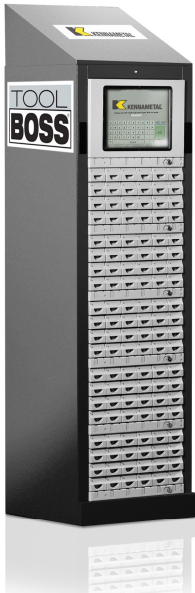
ToolBOSS™ PRODUCT FAMILY



28 Level
ToolBOSS™



MODULO
GEN2



ROTOPOINT



Clear Front
Locker



LID/ECTC



KENNAMETAL

28 LEVEL ToolBOSS™



+ RECONFIGURABLE

Single trays or the entire frame can be easily changed in minutes without the use of tools

+ UNIQUE MANUEL OVERRIDE FACILITY

Unique manual override capability, simple and easy to use. 24/7 availability.

+ SECURITY

Access to the contents of items in the cabinet can be restricted by the use of: username, password, biometric identification and card readers. High-strength drawers locks cannot be forced open by normal or aggressive use without the assistance of tools.

+ COMPATIBILITY

The cabinet is fully compatible with all existing ToolBOSS units

+ EPANDABILITY

The cabinet can be expanded by up to 10 units per system. Provide up to 1.121 secure locations



DIMENSIONS

- 510mm x 545mm x 2010mm

AS A STANDALONE

- 26 levels
- 104 locations
- 1.248 compartments

AS A ADD ON

- 28 levels
- 113 locations
- 1.344 compartments

KENNAMETAL ROTOPOINT



+ LOW TO HIGH VOLUME

The ROTOPOINT provides a wide number of locations from 234 up to a maximum of 468 in a single unit.

+ MANUAL OVERRIDE

In an ideal world, manual override would never be needed, but if required. The ROTOPOINT has a simple manual override which allows the contents to be accessed in case of power outage.

+ SECURITY

The compartment in the ROTOPOINT are hidden from view behind sturdy sliding doors and can withstand vigorous operation. The contents can be randomly distributed around the ROTOPOINT, reducing the risk of unauthorized removal of contents.

+ COMPATIBILITY

The ROTOPOINT is fully compatible with all existing ToolBOSS machines.



LOCATIONS

- 234-468
in a single frame

WEIGHT CAPACITY

- 250kg
(uniform distributed load)

NUMBER OF DOORS

- 13

DIMENSIONS

- 1030mm x 1030mm x 2010mm

KENNAMETAL MODULO GEN2



+ CONFIGURABLE

Can be configured to provide different size drawers and compartments

+ HIGH CAPACITY

Up to 120 secure locations managing up to 1.440 items

+ UNIQUE MANUAL OVERRIDE FACILITY

Easy to use, unique front access manual override capability which requires no disassembly. The override can be selectively set to allow access to only the required items, maintaining the security of the rest of your vital components.

+ COMPATIBILITY

The MODULO is fully compatible with all existing ToolBOSS machines.



DIMENSIONS

- 510mm x 545mm x 2010mm
MODULO XL GEN2
- 510mm x 766mm x 2010mm

EASY SCOOP DESIGN

Compartments shape ensures smooth retrieval of contents.

CONSTRUCTION

Steel frame, ABS plastic drawers

KENNAMETAL

CLEAR FRONT LOCKER



+ CONFIGURABLE

Can be configured to provide different size drawers and compartments

+ FOUR LOCKER CONFIGURATIONS

- S1 - 6 Medium Lockers
- S2 - 18 Medium Lockers
- S3 - 27 Small Lockers
- S4 - 9 Small, 6 Medium, 3 Large

+ STANDALONE

Can be used as a standalone solution for managing large and bulky items.

+ EXPANDABLE

Can be specified with a mixture of different size lockers to provide between 9 and 27 secure locations in a single frame. Up to 10 frame can be connected providing up to 270 secure locations in a single system.

+ COMPATIBILITY

Can be seamlessly integrated into any existing ToolBOSS installation.



DIMENSIONS

- 2000mm x 1090mm x 510mm

INDIVIDUAL LOCKER LIGHT

Each individual locker has it's own lighting capability, allowing full visibility of products within the locker.

KENNAMETAL LID/ECTC



+ UNIQUE MANUAL OVERRIDE

Easy to use manual override possibility to access drawer and compartments and change configuration of compartments if needed.

+ FLEXIBILITY

The LID unit is a complete user – configurable solution to parts management. It can be configured to provide up to 324 single locations in a 1000 mm high cabinet, with the potential to provide 396 single locations in a 1200 mm high cabinet

+ COMPATIBILITY

The Modulo is fully compatible with all existing ToolBOSS machines



AS A ADD ON MACHINE

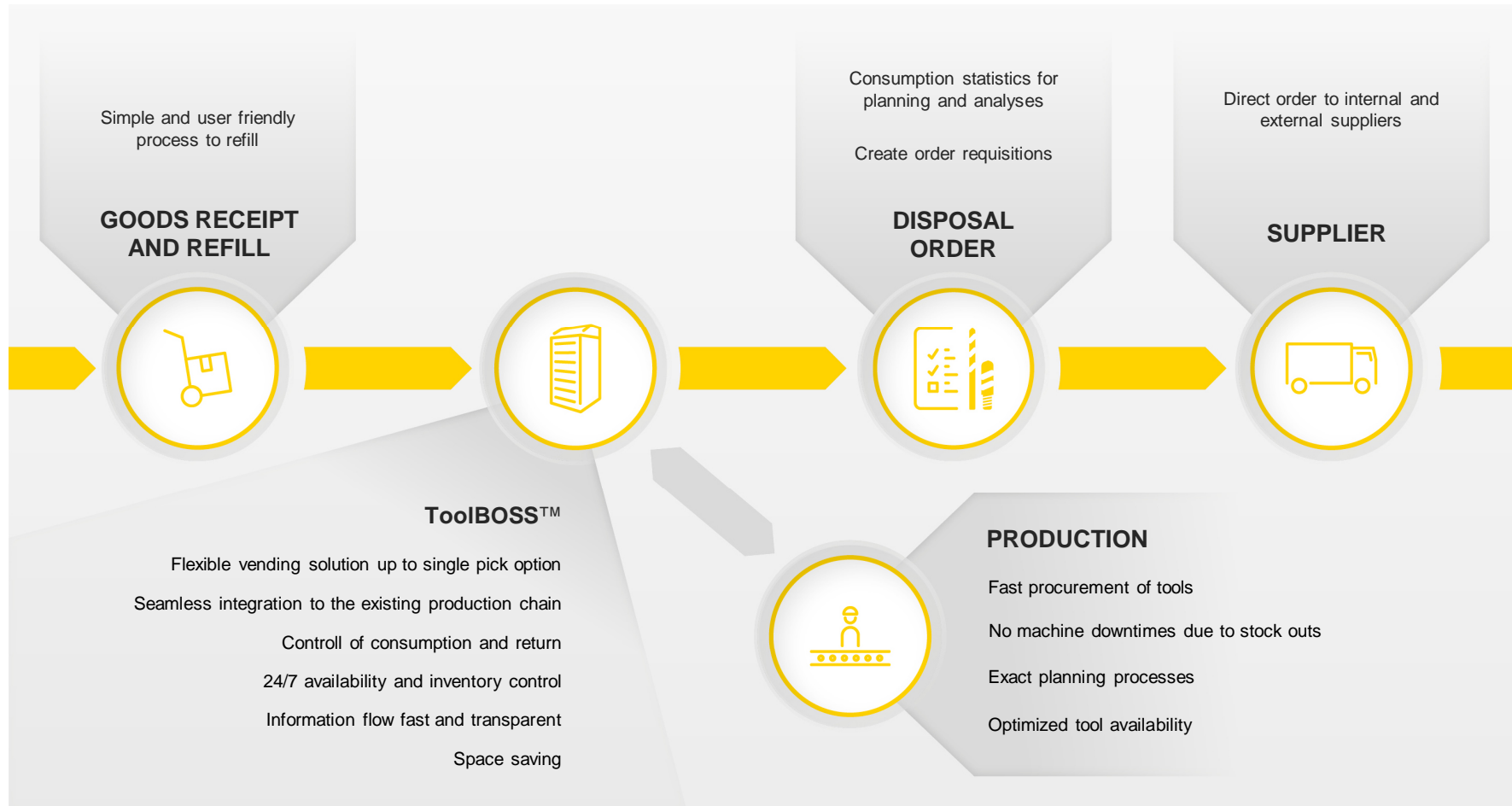
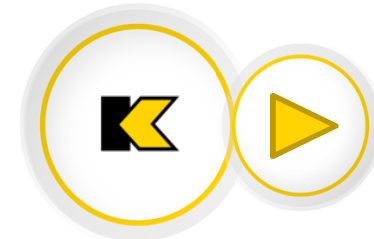
800 D x 800 W x 1000 mm H or
800 D x 800 W x 1200 mm H

AS A STANDALONE MACHINE

800 D x 800 W x 1350 mm H or
800 D x 800 W x 1550 mm H

Solution

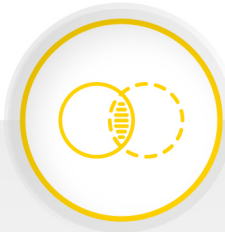
TooIBOSS™ VENDING SOLUTION



BENEFITS FOR THE CUSTOMER



**REDUCE
COSTS**



TAKE CONTROL
and
**INCREASE
TRANSPARENCY**



**REVIEW
CONSUMPTIONS**
and
**OTHER
TRANSACTIONS**



**INCREASE
RESPONSIVENESS**



The Software

WAREHOUSE MANAGEMENT



Configuration by tool type

(new, used, regrind, scrap, tooling kits)



Simple management of **gauges and other measurement tools** with validation date and calibration interval



External stock management



Assignment of items to suppliers, workpieces and machines



Reconditioning management



Kit management



Defined **user rights w Rationing function**



Tool life cycle management



Easy tool search function

via item groups and sub groups



The Software
TOOLBOSS™ UTILITIES



Easy to handle

No automatic updates or complicated installations

Windows OS

Data management in MS SQL

- + Management of workplans
- + Tool costs allocation to job, workpieces, machines, cost centres or cost units
- + Interface to external ERP systems like SAP
- + Employee management
- + Processing of machine data and presetting devices
- + Automated reordering process and EDI procurement
- + Customizing reporting possibilities



Database Server

(internal at customer, local on ToolBOSS or external server)



Client - Connection

External workstation to access ToolBOSS database



ToolBOSS™

vending machine solutions

INTERNET



Support

Direct contact to the Kennametal application engineer

Remote control via licensed **TeamViewer connection**



OPTIMIZATION STEPS



STOCK MOVEMENT

The transaction permissions control access to stock and issue quantities.

All inventory and transaction data are recorded.



REORDER

As soon as minimum stock level is reached, the software creates re-order proposals. Processed manually or sent periodically automatically to the responsible departments or suppliers by e-mail.



ROTATING STOCK

The organization of the tool life cycle controls and monitors the individual stocks of the entire stock in circulation and takes the stock into account for repeat orders.



INVENTORY OPTIMIZATION

The consumption-oriented disposition of the automatic ordering leads with the adaptation of the min. and max. stock level to a higher number of inventory turns.

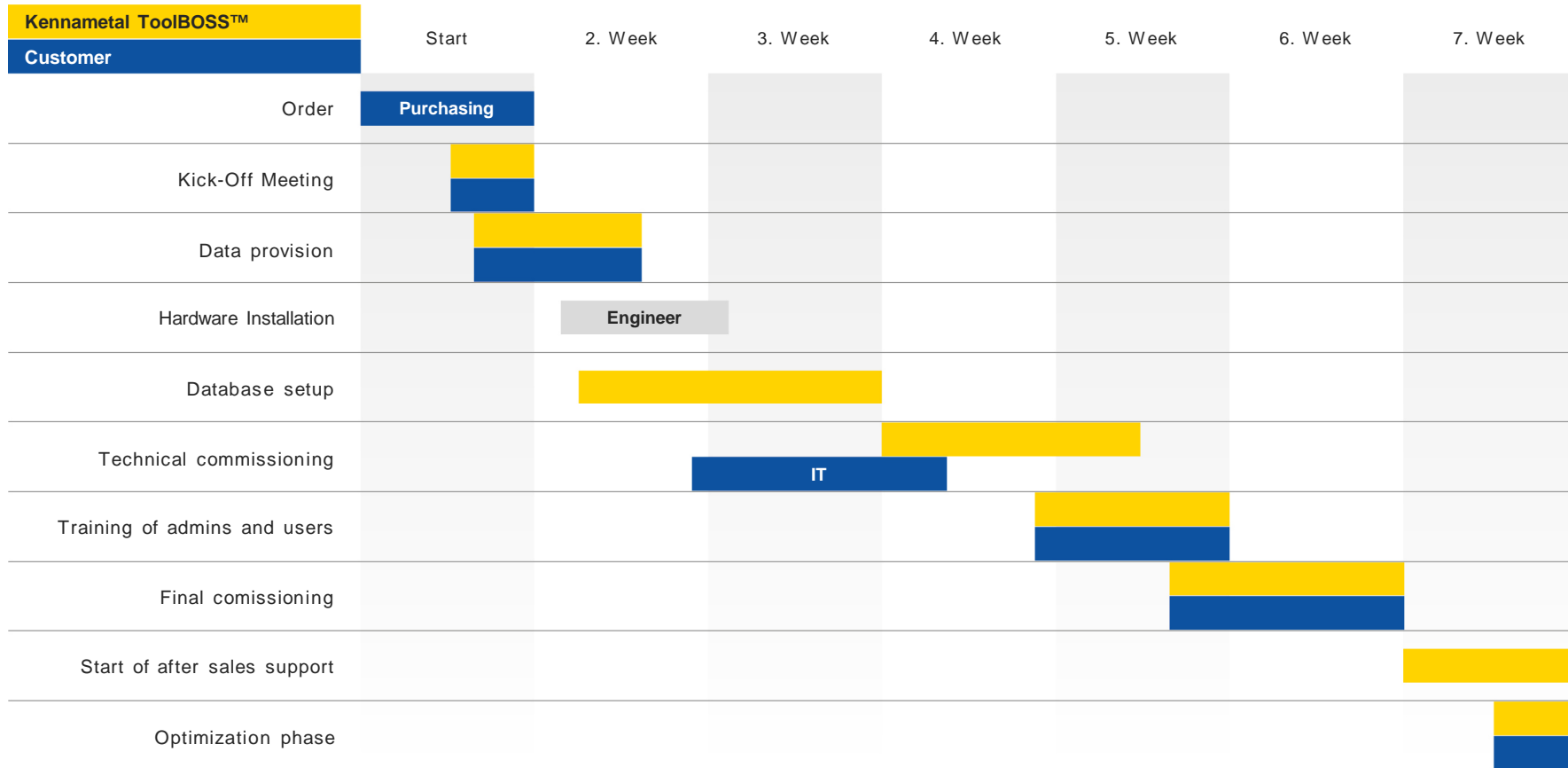


COSTS OPTIMIZATION

The costs transparency can be used to identify potential savings and lead to cost reductions via an action plan.



ToolBOSS™ PROJECT IMPLEMENTATION

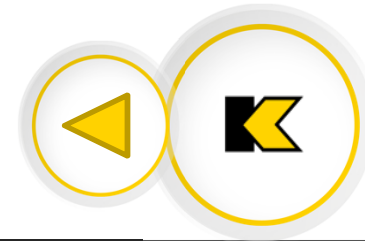


Operational readiness within 2 - 4 weeks possible.



ToolBOSS™

BUSINESS MODELS



SERVICE CONTRACT

DURATION 60 MONTHS

MONTHLY FEE

(Dependent on ordered configuration and sales development with Kennametal products)



PURCHASE CONTRACT

12 MONTHS
Warranty

CASH PAYMENT



MAINTENANCE CONTRACT

Optional to purchase contract

DURATION 24 MONTH
Automatic extension

ANNUAL FEE

